



2026 Township Newsletter

MESSAGE FROM OUR BOARD OF SUPERVISORS

Dear Residents,

As we welcome the warmer months of Spring and Summer 2026, the Board of Supervisors would like to thank our residents, businesses, volunteers, and community organizations for continuing to make our township a great place to live, work, and raise a family.

This year is already shaping up to be an exciting and productive one for our community. We are continuing to invest in important infrastructure improvements, including roadway maintenance, stormwater projects, park enhancements, and the upcoming replacement of one of our township's historic bridges. These projects are designed to improve safety, strengthen our transportation network, and preserve the quality of life our residents expect and deserve.

We are especially grateful for the partnerships and grant funding opportunities that allow us to complete major projects while helping to reduce the financial burden on local taxpayers. Through careful planning and responsible budgeting, we remain committed to maintaining township services and preparing for future growth and community needs.

As always, we encourage residents to stay engaged and informed by attending township meetings, participating in community events, and following township updates through our website and social media channels. The warmer months bring many opportunities to enjoy our parks, trails, local events, and neighborhood gatherings, and we hope everyone has a safe and enjoyable season.

On behalf of the entire Board of Supervisors, thank you for your continued support and pride in our community.

STORMWATER MANAGEMENT



Last fall, Douglass Township worked with the Perkiomen Watershed Conservancy to transform a stormwater basin for our 2025 MS4 Grant Project! This stormwater basin in Douglass Park saw the addition of 2,000 native perennials and 25 shrubs and trees. These plants will help filter and soak

up stormwater while creating a wildlife habitat! A huge thank you to the Perkiomen Watershed Conservancy and all of the wonderful volunteers that made this planting possible! Learn more about the Conservancy's MS4 Program on our website: www.perkiomenwatershed.org/for-municipalities





2026 Township Newsletter

DOUGLASS TOWNSHIP **PARKS AND RECREATION FACILITIES**

DOUGLASS PARK – 1320 E. Philadelphia Avenue Gilbertsville, Pa. 19525

Amenities include: Basketball Courts, Tennis and Pickleball Courts, Picnic Pavilions, Paved Walking Trails, Playgrounds and Swings, Soccer Fields and a Softball Field.

SMITH ROAD PARK – Corner of Congo Road and Smith Road

Amenities Include: Picnic Pavilion, Swings, Passive Open Space and Access to Minister Creek.

CONGO ROAD PARK – 475 Congo Road Gilbertsville, Pa. 19525

Amenities Include: Picnic Pavilion, Naturalized Walking Trails, Scout Encampment.

COME SEE WHAT OUR PARKS HAVE TO OFFER!

Dougllass Township

Parks

Dougllass Community Park – 19.57 acres

Multi-use fields (3) Soccer/Lacrosse
Basketball Courts (2), Tennis Courts (2)
Baseball/Softball Field (1) with concession/Restroom building, Pavilions (2), Picnic Tables, Playgrounds (2)
Swings, Accessible Loop Path (paved)
Open Space (Lawn) with trees, Parking Lots (3)

Libor Tract/Congo Open Space – 38.2 acres

Mostly Wooded, Earthen Paths, Pavilion (1)
Small Open Space (Lawn) area, Parking Lot (1)

Smith Road Park – 4.6 acres

Swings, Open Space (Lawn), Pavilion (1)
Minister Creek, Parking area

Keller Woods Open Space - 43.1 acres

Wooded open space with parking area and natural surface trails



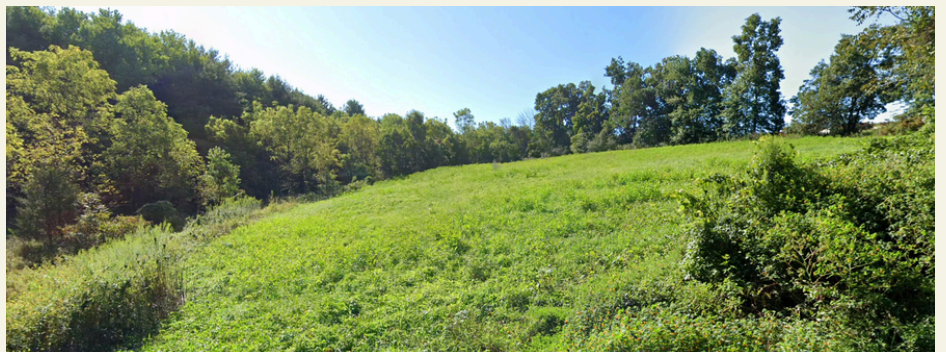
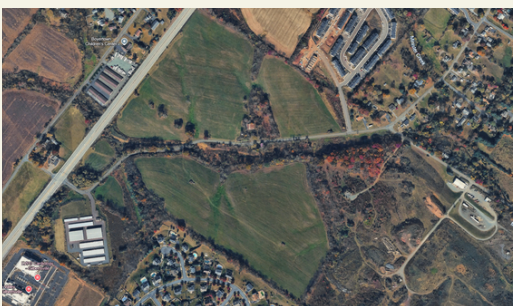


2026 Township Newsletter

DOUGLASS TOWNSHIP WORKING TO SECURE ADDITIONAL OPEN SPACE

The Douglass Township Board of Supervisors identifies the acquisition of this 80-acre parcel as consistent with the Township’s long-range planning objectives related to environmental protection, resource conservation, and sustainable land use management. Preservation of the property as passive open space would serve to protect environmentally sensitive features, conserve wildlife habitat, and maintain scenic and rural character elements that are recognized as essential components of community quality of life. Limiting the potential for more intensive development on the site will support natural stormwater infiltration, protect air quality, and contribute to the retention of interconnected centralized open space systems identified within the Township.

MARY JANE LONG ESTATE - 300 JACKSON ROAD - 80.5 ACRES





DOUGLASS TOWNSHIP



DO NOT KNOCK NO SOLICITING REGISTRY PROGRAM

Chapter 187 of the Douglass Township Code of Ordinances now permits residents and businesses to apply to a Do Not Solicit Registry. This registry is for landowners who do not wish to be contacted by non-exempt peddlers and solicitors at their properties. The Registry list will be maintained by the Douglass Township Police Department Secretary. Visit the website link below to obtain your application today!



[HTTPS://WWW.DOUGLASSTOWNSHIP.ORG/EMERGENCY-SERVICES/POLICE/FORMS/](https://www.douglasstownship.org/emergency-services/police/forms/)



IN PERSON

Residents and businesses can drop off their application for the do not knock registry program to the Douglass Township Police Department during normal business hours.



EMAIL YOUR APPLICATION

Residents and businesses can email their completed application for the do not knock registry program to police@douglasstownship.org



ORDINANCE

<https://ecode360.com/39409443>

 610-367-0466  www.douglasstownship.org



2026 Township Newsletter

TAX COLLECTION

Douglass Township Tax Collector

Kimberlee Stouch

PO BOX 187

Gilbertsville PA 19525

(610)340-8941

douglasstownshiptaxcollector@gmail.com

The Douglass Township Tax Collector collects the following taxes:

1. County, Township and School District **Real Estate** Taxes
2. Township and School District **Per Capita** Taxes
3. Township **Street Light Assessment** Tax

Douglass Township

2.6 mills General Fund

.5 mills EMS Services

.4 mills Fire Protection

Total 3.5 mills

Montgomery County

5.462 mills General Fund

.49 mills Community College

Total 5.952 mills

Boyertown Area

School District

32.690 mills General Fund

Total 32.690 mills

NEW RESIDENTS

Please inform your employer of your new address and the **PSD code** (Political Subdivision code) for Douglass Township, Montgomery County (**060208**).

This will ensure your local taxes will be put to use in your new resident township.



Berks EIT Bureau

1125 Berkshire Blvd

Suite 115

Wyomissing PA 19610

Phone: (610) 372-8439

Toll free: 1 (855) 372-8439

www.berkseit.com

LOCAL EARNED INCOME TAX

Under the Local Enabling Tax Act, all residents of Douglass Township are assessed a tax of 1% on their earned income. 1/2 of the 1% (0.5%) supports the Boyertown Area School District, and 1/2 of the 1% (0.5%) is general revenue for Douglass Township.

Berks Earned Income Tax Bureau collects the **Earned Income Tax** (EIT) and **Local Services Tax** (LST) for Douglass Township.



2026 Township Newsletter

PUBLIC WORKS DEPARTMENT

The Public Works Department takes their role seriously in the community by providing the ongoing care and maintenance of municipal infrastructure and public facilities.

The **Douglass Township Public Works Facility** is located at **108 Municipal Drive** in Gilbertsville. Public Works operations, including requests for service, may be contacted by telephone at **610-367-0984**.

The Township Public Works Department completes the maintenance of roadways and facilities with 6 full time personnel.

Maintenance responsibilities include:

- Maintain and repair **73.08 miles** of roadways and bridges
- Township buildings, properties and facilities
- Fleet of vehicles and heavy equipment
- Community parks, walking trails and passive open space
- Storm sewer systems and pipes
- Streetlights, traffic signals and traffic signs
- Snowplowing and winter maintenance
- Roadside mowing within the ultimate right of way

2026 ROAD PROJECTS

TAR AND CHIP

Buchert Road

(Between Cross Road and Gilbertsville Road)

BLACKTOP OVERLAY

Congo Niantic Road

Specht Road

Jordan Drive



REPORT A POTHOLE OR HAZARDOUS ROAD CONDITION

Potholes happen when water seeps into cracks in the pavement and expands as it freezes, breaking down the road surface over time. Temperature swings make the problem worse, leading to bigger cracks and rough roads.

Douglass Township

Call: 610-367-0984

Submit online:

<https://www.douglasstownship.org/resources/request-for-services/>

PennDOT

Call: 1-800-FIX-ROAD

Submit online:

<http://www.customercare.penndot.pa.gov/>





2026 Township Newsletter

TOWNSHIP ANNOUNCES FUNDING AWARD FOR COUNTY LINE ROAD BRIDGE REPLACEMENT PROJECT

The Douglass Township Board of Supervisors are pleased to announce that funding has been secured for the replacement of the County Line Road Bridge through a combination of the Delaware Valley Regional Planning Commission (DVRPC) Retro-Reimbursement Grant Program and a Pennsylvania Department of Transportation (PennDOT) Multimodal Transportation Fund grant.

The project will replace the existing bridge, originally constructed in 1934, with a modern prefabricated concrete bridge designed to improve long-term safety, reliability, and transportation efficiency for residents, emergency services, and the traveling public.

The bridge replacement will be completed using a design-build delivery method, allowing the design and construction phases to move forward simultaneously to reduce overall project duration and improve efficiency. Construction is expected to

take approximately 90 days once work begins. Township officials anticipate the new bridge will reopen to traffic by December 2026.

This project represents a significant investment in our community's infrastructure. The replacement of this aging bridge will improve public safety, enhance mobility, and ensure reliable access for residents and emergency responders for decades to come.

We are grateful to DVRPC and PennDOT for their partnership and financial support in making this important project possible.

The new prefabricated concrete bridge system was selected to minimize construction time and reduce impacts to motorists and surrounding neighborhoods while providing a durable, low-maintenance structure capable of serving the community well into the future.

For additional information, please contact Township Manager David Thompson at 610-367-6062 or by email at dthompson@douglasstownship.org



SUMMER STORMWATER SOLUTIONS



SUMMER 2026

Stormwater runoff is rainwater that flows over lawns, driveways and streets, picking up pollutants along the way and carrying them straight into our waterways. This summer you can help to reduce stormwater runoff by following the tips below!

SIMPLE STEPS YOU CAN TAKE AT HOME TO PROTECT LOCAL STREAMS & CREEKS!

SUMMER STORMWATER TIPS FOR YOUR PROPERTY

- **Water Wisely:** Water lawns early in the morning or late evening to reduce water loss through evaporation. Avoid overwatering which can lead to runoff.
- **Use Fertilizers & Pesticides Sparingly:** Only apply when necessary and follow label instructions. Never apply before rain is expected!
- **Mow Smart:** Keep grass longer (3") to absorb more water. Leave clippings on the lawn as a natural fertilizer - never blow into streets or storm drains!
- **Wash Cars the Right Way:** Take your car to a commercial car wash where water is treated. If washing at home, do it on grass or gravel so water can soak in.
- **Try a Summer-Friendly Project:** Plant native flowers, shrubs or trees that soak up rain. Install a rain barrel to collect and reuse stormwater!



Learn more at:

www.perkiomenwatershed.org

BACK TO THE BASICS

RECYCLING 101

THE MATERIALS THAT WE ALWAYS ACCEPT

ALWAYS



THE MATERIALS THAT WE NEVER ACCEPT

NEVER



HELPFUL HINTS TO AVOID IMPROPER RECYCLING

NEVER BAG YOUR RECYCLABLES.

Recyclables should be placed in your cart **LOOSE, DRY** and relatively **CLEAN**.

WISHCYCLING IS COUNTERPRODUCTIVE.

Tossing items into the recycling without checking whether they are recyclable causes significant issues at our plant. In many cases, these unacceptable items will be hauled to the landfill regardless.

WHEN IN DOUBT, THROW IT OUT!

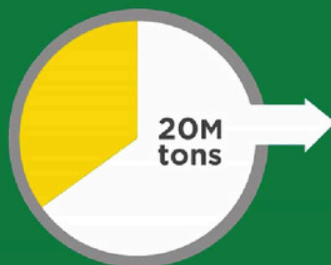
RECYCLING ARROWS DO NOT ALWAYS MEAN RECYCLABLE.

Recycling arrows refer to the type of plastic an item is made from, not whether or not it is recyclable at our plant.

HINT: Typically only #1, #2 and #5 plastics are recycled.

DID YOU KNOW?

Out of 37.4 million tons available to be recycled, 20 million tons are thrown in the trash due to lack of access and participation.



If these 20M tons were recycled, it would:



Conserve an annual energy equivalent of **154 million barrels of oil**



Reduce U.S. greenhouse gas emissions by **96 million metric tons** of carbon dioxide equivalent



Generate **370,000 full-time equivalent (FTE) jobs**



Achieve the equivalent of taking more than **20 million cars** off U.S. highways.



Planning & Zoning Department

BUILDING & ZONING

We would like to inform all residents and contractors that Douglas Township utilizes a third-party inspection agency for building inspections and plan reviews. This allows us to ensure all construction projects comply with local building codes and safety standards.

Fillable Permit Applications can be found on the Douglas Township website.

All permit application submissions can be submitted in person to the Douglas Township Administration Building located at 1320 E. Philadelphia Avenue Gilbertsville, Pa. 19525 or electronically to our Building and Zoning Department.

BUILDING INSPECTIONS

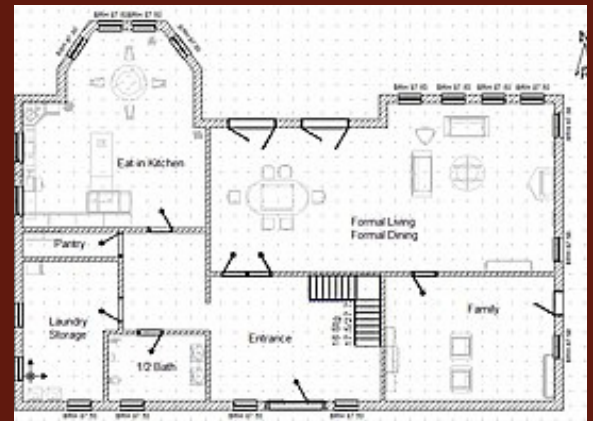
To schedule inspections, please contact the inspection agency directly.

KRAFT MUNICIPAL GROUP

Inspection requests: 610-775-7185

Email: contact@kraftmunicipalgroup.com

Please provide **48 hours notice** for inspection requests



GENERAL INFORMATION AND ZONING INFORMATION

For general inquiries or for zoning information, please contact the **Douglas Township Administration Building** at **610-367-6062**, and *press the prompt* for **Building and Zoning Department** or visit our website listed below.

<https://www.douglasstownship.org/departments/building-zoning/>





2026 TROUT RODEO

The Douglass Township Board of Supervisors and Recreation Committee would like to thank everyone who attended the annual trout rodeo held on the Mashintonio Farm on Saturday May 9, 2026.

There were over 100 children in attendance for the morning session and our United States Military Veterans finished off the day with an afternoon session.

Thank you to Tony Mashintonio for offering your beautiful property for this event each year. We would also like to thank our sponsors for the event and all of the volunteers who made this day possible. Without your community support, this event would not be a success each year.

DOUGLASS TOWNSHIP
MONTGOMERY COUNTY

2026 ANNUAL TROUT RODEO

SATURDAY MAY 9, 2026 8:00AM - 11:30AM

LOCATION
Mashintonio Farm
170 Linsenbeidler Road
Gilbertsville, Pa. 19525

KIDS UP TO AGE 15 MAY FISH
PLEASE BRING YOUR OWN
FISHING GEAR AND BAIT

Pre-Registration Not Required

FOOD - DRINKS - PRIZES - FUN FOR EVERYONE

www.douglasstownship.org

THANK YOU TO OUR 2026 EVENT SPONSORS!

Kraft Municipal Group – Brant and Associates LLC – Pennoni Engineering
Gabelsville Athletic Association
Winners Circle Awards – Brown and Brown Insurance
Friendship Hook and Ladder of Boyertown Social Club



POLICE DEPARTMENT

A Message from Chief Evans:

As we approach the end of May, I want to thank the residents of Douglass Township for their continued support of our Officers and our Police Department.

Your cooperation and trust are essential in keeping our neighborhoods safe, and together, as we continue to make our community a great place to live and raise a family.

Sincerely,

Chief Robert Evans

PENNSYLVANIA LAW UPDATE

STARTING JUNE 6, 2026

PENNSYLVANIA POLICE WILL ISSUE A **\$50 FINE** PLUS COURT COSTS, TOTALING ROUGHLY **\$198.50**

PAUL MILLER'S LAW
SENATE BILL 37

IT IS NOW A PRIMARY OFFENSE TO HOLD, TOUCH, OR USE A PHONE WHILE DRIVING, EVEN WHILE STOPPED AT RED LIGHTS OR IN TRAFFIC.

- NO HAND-HELD DEVICE USE:** Holding, touching, or using your phone is illegal.
- EVEN WHILE STOPPED:** This includes red lights and traffic delays.
- PRIMARY OFFENSE:** Police can pull you over and cite you just for using your phone.
- \$50 FINE + COURT COSTS:** Totalling roughly \$198.50

PUT THE PHONE DOWN. STAY ALERT. STAY SAFE. PROTECT YOURSELF. PROTECT OTHERS.

DRIVE SAFE PA

CHILD SEAT SAFETY CHECKS

Did you know that the Douglass Township Police Department has a certified **child seat inspection technician** on staff? Officer Sedgwick is available by appointment to assist you with inspection and proper installation of your child safety seat. Please contact the Douglass Township Police Department at **610-367-0466 ext. 111** to schedule your appointment today!



THREE OFFICERS RECEIVE PROMOTION TO POSITION OF CORPORAL

The Douglass Township Police Department recognizes the critical role of police supervision in maintaining integrity, accountability, and effectiveness within our ranks. Leadership ensures that our officers uphold the highest standards of professionalism and service to the community. Congratulations to Detective Dan Castellucci, Officer Brent Ziegler, and Officer Mark Dykie on their promotions to the rank of Corporal.





Douglass Township Police Department Awarded State Grants

2025 DCED Grant - \$30,200.00

This grant assisted the Douglass Township Police Department replace our current less lethal tazers with a new Tazer 7 model and the purchase of two additional portable motorola radios.

2026 DCED Grant - \$185,000.00

This grant was awarded for the purchase of two new patrol vehicles and Axon in car camera systems for the fleet of police department vehicles.



DOUGLASS TOWNSHIP WELCOMES TWO NEW OFFICERS

The Douglass Township Police Department proudly introduces our two newest patrol officers.

Officer Michael Choiniere



Officer Choiniere started with our department in April of 2026. He has many years of prior police experience including the last 12 years with Norristown Police Department where he obtained the rank of Detective Corporal prior to coming to our agency. He is currently in our department Field Training Program and will be another great asset to our department moving forward.

Officer Veronica Maryanski



Officer Maryanski graduated the Berks County Municipal Police Academy in 2025 and hired by our department shortly after her graduation. She completed her Field Training with the Department in early 2026. Officer Maryanski came to our department with no prior police experience and is doing a great job learning police work and becoming a member of our community. We look forward to her continued growth in law enforcement.



THE DOUGLASS TOWNSHIP POLICE DEPARTMENT RECOMMENDS 6 WAYS TO PREVENT FALLING VICTIM TO A SCAM



1. TAKE A STEP BACK

If someone says your grandchild needs bail money, call the parents or the police department to verify. If someone claiming to be your new soulmate needs money ASAP, cut ties immediately.



2. BE CAUTIOUS

When someone you don't know calls, texts or knocks on your door offering services, trust your gut and remain skeptical.



3. DON'T SHARE

Do not provide personal identification over the phone or in an email with businesses or people you don't know or haven't verified.



4. VERIFY, VERIFY, VERIFY

The internet makes it easy to confirm a phone number, website or even the identity of a potential romantic partner.



5. STAY CURRENT ONLINE

Keep your computer updated with the latest antivirus security and malware protection.



6. HANG UP OR LOG OFF

If you're unsure of someone's identity, cut them off immediately.



GILBERTSVILLE

Fire and Rescue

1454 E. Philadelphia Ave • Gilbertsville, PA 19525 • PO Box 454

Dear Neighbor:

As we begin 2026, the membership of Gilbertsville Fire and Rescue would like to thank you for your continued support of our volunteer fire company. Your generosity allows us to continue to provide fire and rescue services 24 hours a day, 7 days a week, 365 days a year.

In 2025, our dedicated volunteers responded to 312 emergency calls, including structure fires, vehicle accidents, medical assists, fire alarms, and public service calls. Each response requires highly trained personnel, reliable apparatus, and up-to-date equipment to ensure we can serve you safely and effectively.

Although we are proud to serve our community as volunteers, operating a fire company is not free. The cost of fuel, protective gear, training, insurance, apparatus maintenance, and lifesaving equipment continues to rise each year. A single set of turnout gear can cost over \$3,500 and replacing or maintaining fire apparatus requires significant investment and planning.

Your annual fund drive contribution plays a critical role in helping us:

- Maintain and repair fire trucks and emergency equipment
- Purchase lifesaving tools and protective gear
- Provide ongoing training for our volunteers
- Keep our station operational and ready to respond

We respectfully ask you to consider a tax-deductible donation to support our 2026 operations. Every contribution—large or small—directly benefits the safety and protection of our community.

Please use the enclosed envelope to make your donation or visit www.gilbertsvillefireandrescue.org to contribute online. If your employer offers a matching gift program, we encourage you to take advantage of that opportunity as well.

Please contact us today if you are interested in volunteering with our organization. We meet every Thursday evening beginning at 6:30PM, so feel free to stop in, ask questions and learn more about our department and the services that we provide.

On behalf of the Officers and Members of the Gilbertsville Fire and Rescue Company, thank you for your continued trust and support. It is our honor to serve you.

Stay safe,

Andrew A. Duncan
Fire Chief





EMS UPDATE

Emergency Medical Services Tax Implemented

In 2023, you may have noticed a new line item on your tax bill labeled "Emerg Med Srvc". This **Emergency Medical Services (EMS) Tax** does not replace your annual ambulance subscription.

The emergency medical services tax supplements the cost to operate and staff an advanced life support ambulance 24 hours a day, 7 days a week within our municipal borders. Medical billing, Medicaid and Medicare are no longer covering the actual costs to provide ambulance service in the United States.



The Township has two primary response agencies that have first due coverage area in our community. Gilbertsville Area Community Ambulance Service and Bally Community Ambulance are the two provider agencies that proudly serve the residents of Douglass Township.

The result of not properly funding emergency medical services in our community would be the failure and loss of our local EMS agencies, longer response times and ultimately the loss of life.



BALLY AMBULANCE

Phone: 610-845-2501

Fax: 610-845-7898

537 Chestnut Street

Bally, Pa. 19503

<https://ballyambulance.org>



GILBERTSVILLE AREA COMMUNITY AMBULANCE SERVICE

Phone: 610-367-9191

Fax: 610-369-3931

Email: mail@medic332.org

91 Jackson Road
Gilbertsville, Pa. 19525

www.medic332.org





Douglass Township – Montgomery County

1320 E. Philadelphia Avenue, PO Box 297, Gilbertsville, Pa. 19525

Telephone: 610-367-6062 Fax: 610-367-7124

Website: www.douglasstownship.org

Meetings

Board of Supervisors: 1st and 3rd Monday of each month at **7:00PM**

Emergency Services Board: 2nd Monday of each month at **6:00PM**

Planning Agency: 4th Monday of each month at **7:00PM**

Board of Supervisors

Joshua Z. Stouch – Chairman

Donald Bergstresser – Vice Chairman

Sara Carpenter – Supervisor

Administrative Staff

Township Manager: David S. Thompson

Township Secretary: [Marcy Meitzler](#)

Township Treasurer: [Cynthia O'Donnell](#)

Zoning Officer: Andrew A. Duncan

Roadmaster: [Michael Heydt](#)

Recycling Coordinator: [Mckenna Powanda](#)